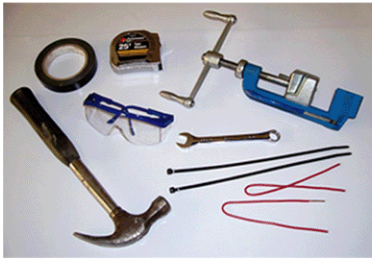


CRYSTAL VALLEY DECORATING TITAN BANNER BRACKETS

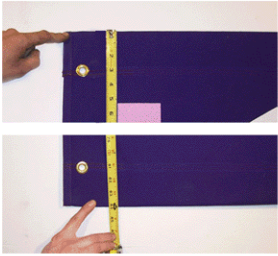
INSTALLATION INSTRUCTIONS



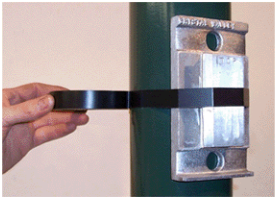
Recommended Tools and Accessories

Ladder or Hydraulic Lift, Tape Measure, Roll of Tape, Hammer, 9/16" end Wrench, Safety Glasses, Banding Tensioning Tool (sold separately available from Crystal Valley), suitable tying material (I.E. nylon cable ties, solid strand Electrical wire, nylon cord, etc.)

Read Instructions Completely before proceeding



STEP 1 (A) Measure the overall length of the banners to be hung.
(B) Determine how high you would like to position the bottom edge of the banner on the pole. We recommend 16' over vehicle lanes and 12' over pedestrian walkways.



STEP 2 Position the bottom edge of the lower bracket base plate against the pole at the height determined in STEP 1(B) and tape it to the pole, be sure the word "TOP" reads upright.

STEP 3

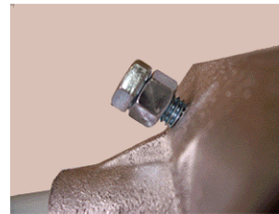
Proceed to install the steel banding around the upper and lower base plates. For the best banding installation results, we recommend using a Banding Tensioning Tool. Be sure to follow the instructions included with that device. After you finish installing the banding, please proceed with step 4.



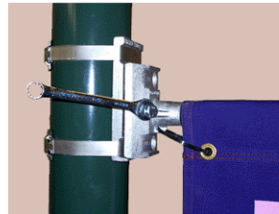
STEP 4 Deduct 6 1/2" from the overall banner length in step 1(A) and position the upper bracket base plate directly above the lower base plate, with your calculated measurement being the space between the plates.



STEP 5 Repeat steps 2 and 3 to mount the upper bracket base plate to the pole.



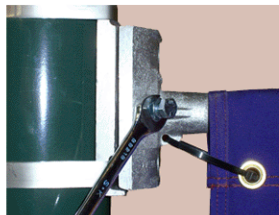
STEP 6 Your Titan Banner Brackets were shipped to you with the jam nuts snugged against the bolt head. Insure that they are still in that configuration.



STEP 7 Insert the fiberglass arm of the slider plate into the top pocket of the banner. The banner grommet should be toward the pole.



STEP 8 Loosen tensioning bolt if necessary and slide the slider plate (with the banner hanging from the fiberglass arm) all the way down onto the upper base plate. Be sure the end marked "UP TOP" is ON TOP.



STEP 9 With the slider plate bottomed out on the base plate, tighten the tensioning bolt to lock the slider plate in place, then tighten the jam nut to lock the tensioning bolt.

STEP 10 Using suitable tying material, tie the banner to the slider plate using the grommet on the banner and the tie down hole on the slider plate.



STEP 11 Repeat steps 6-10 for lower bracket. Except turn slider so end marked "UP BOTTOM" is upright and prior to tightening tensioning bolt, force slider down until banner is taut across entire surface.